

YESHWANTHPUR, BENGALURU

REERA No: PRIM/KA/RERA/1251/309/PR/110625/007817,
available at website: <http://rera.karnataka.gov.in>.

GODREJ TIARA

GODREJ  **TIARA**
— FOR LIFE'S PRECIOUS MOMENTS —

Godrej | **PROPERTIES**

Our Purpose Statement



We create spaces that enable **Everyday Joys**
One Community,
One Family, and
One Home at a Time.

Crafting timeless landmarks across Bengaluru



GODREJ WOODSCAPES

RERA No: PRM/KA/RERA/1251/446/PR/170524/006882,
PRM/KA/RERA/1251/446/PR/170524/006888



GODREJ LAKESIDE ORCHARD

RERA No: PRM/KA/RERA/1251/446/PR/300924/007105



GODREJ ATHENA

RERA No: PRM/KA/RERA/1251/446/PR/090123/005605



GODREJ MSR CITY

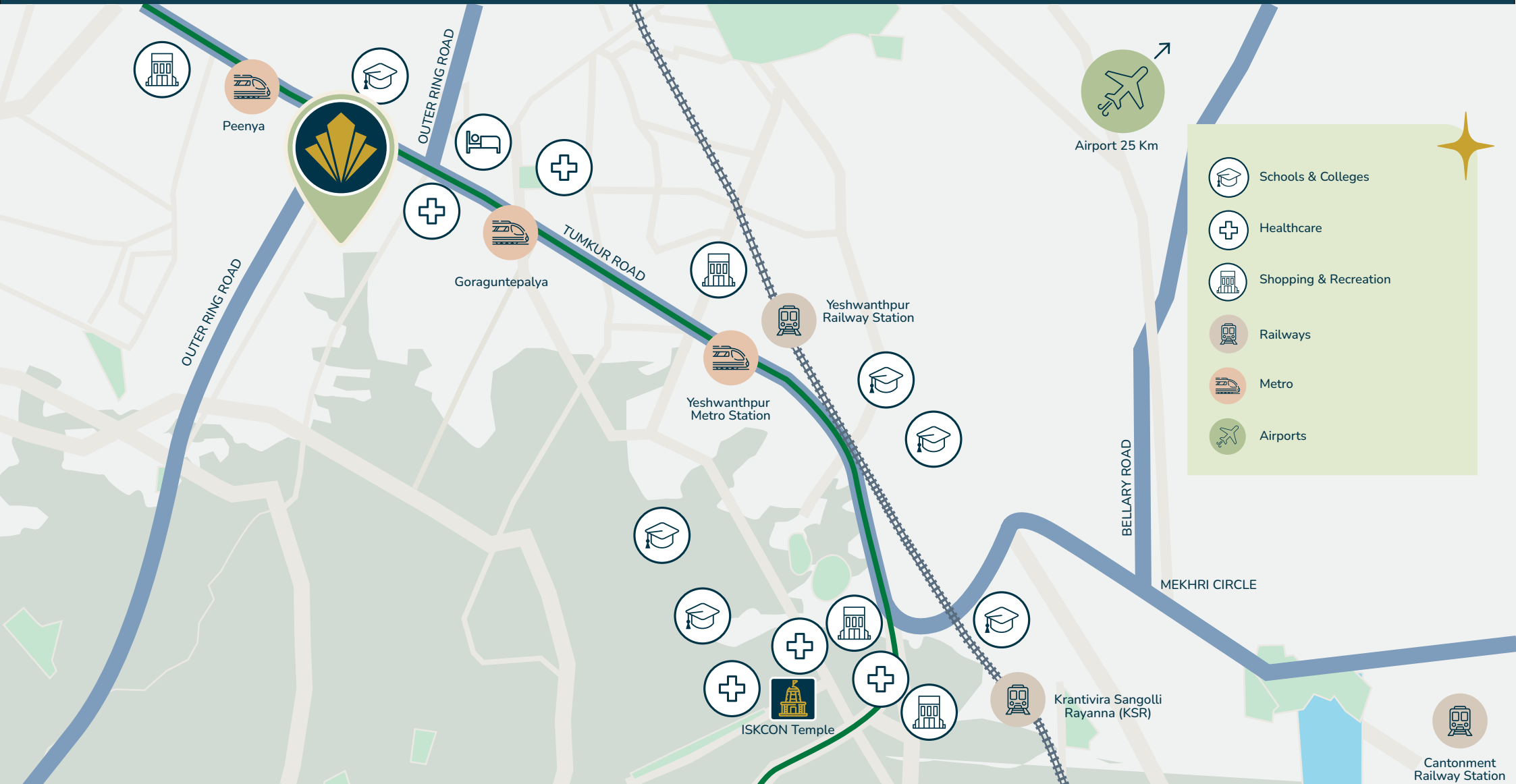
RERA No: PRM/KA/RERA/1250/303/PR/010425/007644

Yeshwanthpur

A hub of connectivity and convenience

Located in the heart of Bengaluru, Yeshwanthpur is a dynamic blend of residential, commercial, and industrial spaces. With excellent connectivity to major roads, metro stations, the Yeshwanthpur Junction Railway Station, and the Kempegowda International Airport, it offers seamless access to key areas of the city. The neighbourhood is also close to the ISKCON Temple and major commercial hubs like the World Trade Centre, making it a sought-after destination for professionals and businesses alike.

A mélange of old and new Bengaluru, Yeshwanthpur perfectly balances heritage and modernity for those seeking convenience, growth, and a well-rounded lifestyle.



Where every destination feels within reach

COMMUTE AND CONNECTIVITY

Airport



- Located 34 Km away from the Kempegowda International Airport.
- Easily accessible via the Outer Ring Road and Bellary Road.

Roadways



- National Highway 4 - The subject site is located adjacent to NH 4.
- Outer Ring Road - The subject site is located adjacent to Outer Ring Road.
- Bellary Road - The subject site is located 6.0 Km away from Bellary Road/ Mekhri Circle.

Railways



- Yeshwanthpur Railway Station - 1.5 Km from the site.
- Krantivira Sangolli Rayanna - Bengaluru Railway Station (KSR) is located at a distance of 8 Km from the site.
- Cantonment Railway Station - 9.5 Km from the site.

Metros



- Goraguntepalya - 0.15 Km/ 1 Min
- Peenya Metro Station - 1.5 Km/ 3 Min
- Yeshwantpur Metro Station - 1.3 Km/ 3 Min

HEALTHCARE FACILITIES

RECREATIONAL AVENUES

UPCOMING INFRASTRUCTURE

SCHOOLS & COLLEGES



1. People Tree Hospital (0.1 Km) - 0.5 Min Drive
2. Sparsh Hospital (0.55 Km) - 2 Min Drive
3. Manipal Hospital (2.5 Km) - 6 Min Drive
4. Narayana Nethralaya (3.7 Km) - 10 Min Drive
5. Fortis Hospital (4.1 Km) - 11 Min Drive
6. M.S. Ramaiah Hospital (5.3 Km) - 14 Min Drive



1. PVR Vaishnavi Sapphire Mall (1.2 Km) - 4 Min Drive
2. Metro Cash & Carry (2.9 Km) - 9 Min Drive
3. Orion Mall (2.9 Km) - 9 Min Drive
4. Ikea (5.3 Km) - 16 Min Drive
5. Lulu Mall (7.3 Km) - 23 Min Drive
6. Mantri Square (7.3 Km) - 23 Min Drive
7. GT World Mall (8 Km) 20 Min Drive



1. Sattva Knowledge point (0.85 Km) - 5 Min Drive
2. DNR Altitude (0.9 Km) - 3 Min Drive
3. Brigade Twin Towers (1.2 Km) - 5 Min Drive
4. BCM Vertex (2.3 Km) - 10 Min Drive
5. Puravankara - Keppel Project (2.6 Km) - 9 Min Drive
6. Prestige Capital Square (7.3 Km) - 23 Min Drive



1. National Public School (1 Km) - 4 Min Drive
2. Euro Kids, Nandini Layout (1.9 Km) - 8 Min Drive
3. Brigade School (3 Km) - 9 Min Drive
4. BGS World School (3.9 Km) - 10 Min Drive
5. Indian Institute Of science (4.1 KM) - 9 Min Drive
6. Kendriya Vidhyalaya (4.1 KM) - 15 Min Drive
7. Ramaiah Institute of Technology (5.7 K) - 17 Min Drive
8. Ramaiah Medical College (6Km) - 18 Min Drive